

Building Solutions for Mass Master Data Maintenance

Israel Rosales | Winshuttle



About Me



Spanish, married with a little baby girl
10 years in SAP consultancy (SCM modules)
Since November 2012 in Winshuttle



Solutions Engineer for EMEA Distribution
Part of the Master Data internal team



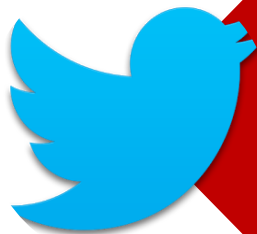
Training: Tips for Excel MD solution building



Introduction



App – Winshuttle



#WUG2014 – Twitter



SSID – Winshuttle
Password – wug2014



Problem

Too many excels with too many scripts

The image shows two overlapping screenshots. On the left is an Excel spreadsheet with columns A through M, containing data for 'Mother board H12'. On the right is a SAP MM01 transaction screen titled 'Mass Material Master Management (MM01, MM02 and MM03)'. The SAP screen displays a table of material characteristics with columns for Material, Ind. Sector, Material Type, Description, UoM, Old Material, Gross Weight, Weight Unit, Net Weight, Plant, Sales Org., D.Channel, Trans. Group, Load Group, Val.Class, and Price C. Ind.

Material	Ind. Sector	Material Type	Description	UoM	Old Material	Gross Weight	Weight Unit	Net Weight	Plant	Sales Org.	D.Channel	Trans. Group	Load Group	Val.Class	Price C. Ind.
IRSECC411	1	HAWA	SEC demo new description 001	PC	OLD1	20	KG	10	0001	1000	10	0001	0001	1100	V
IRSECC412	1	HAWA	SEC demo new description 002	PC	OLD2	25	KG	11	0001	1000	10	0001	0001	1100	V
IRSECC413	1	HAWA	SEC demo new description 003	PC	OLD3	26	KG	12	0001	1000	10	0001	0001	1100	V
IRSECC414	1	HAWA	SEC demo new description 004	PC	OLD4	26	KG	13	0001	1000	10	0001	0001	1100	V

No real MD solution tool present

Roundtrip (create, download and modify) but no more

What about good MD mass Excel tools?

- Complete and/or atomic operations
- One single Excel file

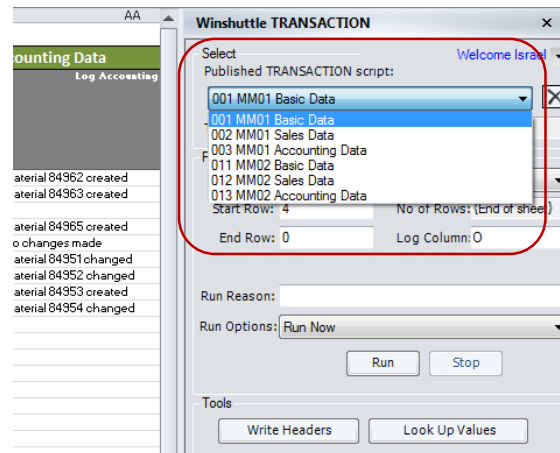


Solution (First approach...)

One single Excel:

Materials Management										Sales Data										Accounting Data					
Controls		Material Info			Basic Data					Log Basic Data		Plant	Sales Org.	Plant Class	Log Class 1	Log Class 2	Trans Group	Load Group	Log Sales Data		Plant	Val. Class	Std. Price (ONLY AT CREATIO N)	Log Accounting Data	
Create Basic	Extend Sale	Material Number	Industry Sector	Material Type	Mat. Description	Base UoM	Gross Weight	Net Weight	Weight UoM																
X	X	X			84962 C FERT	Mat.Desc 0510-1	EA	20	15 KG	Material 84962 created	1000	1000	10	1	1'0002	0001	Material 84962 created	1000	7925	25	Material 84962 created				
X	X	X			84963 C FERT	Mat.Desc 0510-2	EA	20	15 KG	Material 84963 created	1000	1000	10	1	1'0002	0001	Material 84963 created	1000	7925	30	Material 84963 created				
X	X	X			84964 C FERT	Mat.Desc 0510-3	EA	20	15 KG	Material 84964 created	1000	1000	10	1	1'0002	0001	Material 84964 created								
X	X	X			84965 B FERT	Mat.Desc 0510-4	EA	130	115 KG	Material 84965 created	1000	1000	10	0	0'0001	0002		1000	7925	100	Material 84965 created				
X	X	X	X	X	84966 B FERT	Mat.Desc 0510-5	EA	100	80 G	No changes made	1000	1000	10	0	0'0001	0002	No changes made	1000	7925	200	No changes made				
					84951			80	75 G	Material 84951 changed	1000	1000	10	1	0'0001		Material 84951 changed	1000	7925		Material 84951 changed				
					84952			80	75 G	Material 84952 changed	1000	1000	10	0			Material 84952 changed	1000	7925		Material 84952 changed				
					84953						1000	1000	10	0	0'0001		Material 84953 changed	1000	7925		Material 84953 changed				
					84954			90	65 KG	Material 84954 changed	1000	1000	10	1	1'0001	0002	Material 84954 created	1000	7925	55	Material 84954 created				
					84955			90	65 KG	Material 84955 changed	1000	1000	10	1	1'0001	0002	Material 84954 created	1000	7925		Material 84954 changed				
X					84967 C FERT	Mat.Desc 0510-6	EA	130	110 G	Material 84967 created															

With different areas
And different scripts



Build with iterations

Steps for creation:

- Define the format of the single Excel file
- Create all the scripts with mapping according to single Excel file
- Testing of each script without publishing
- Publish the script
- Improve by repeating from step 2 (sometimes 1 if format changes)



Tips & Tricks

Think about the format and sections of the Excel

- Avoid reworks in Excel and scripts

Perform 99% of the script testing WITHOUT publishing

- Avoid unpublishing and republish after errors

Create small/atomic scripts, not big scripts

- Easier to test, reuse, change or improve



First improvement

Let's remove wrong executions by using conditions:

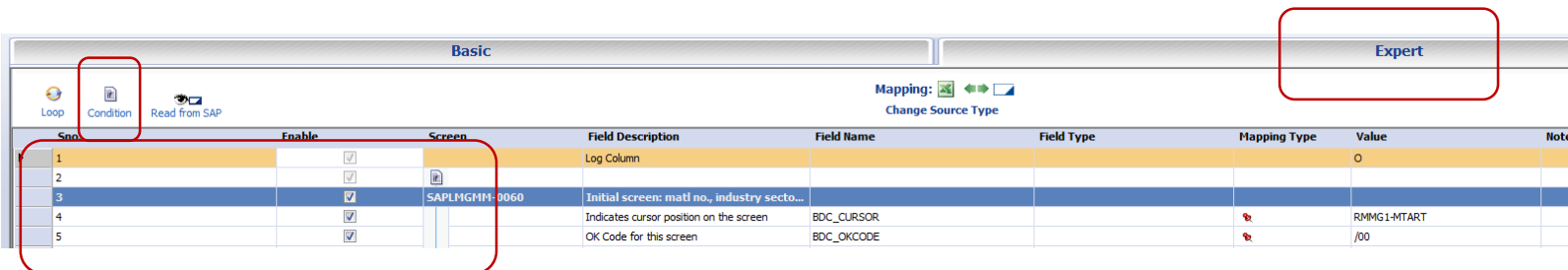
- Columns to control each script:



A screenshot of the SAP Script Controls table. The table has columns labeled A through F. The rows are: 'Create Basic', 'Extend Sales', 'Extend Acct', 'Change Basic', 'Change Sales', and 'Change Acct'. The first three rows have 'X' marks in columns A, B, and C. The last two rows have 'X' marks in columns A and B.

	A	B	C	D	E	F
Create Basic	X	X	X			
Extend Sales	X	X	X			
Extend Acct	X	X	X			
Change Basic	X	X				
Change Sales	X	X				
Change Acct	X	X				

- Conditioning each script:



A screenshot of the SAP Script Conditioning table. The table has columns: Sno, Enable, Screen, Field Description, Field Name, Field Type, Mapping Type, Value, and Note. The 'Condition' button is highlighted in a red box. The table contains five rows of data.

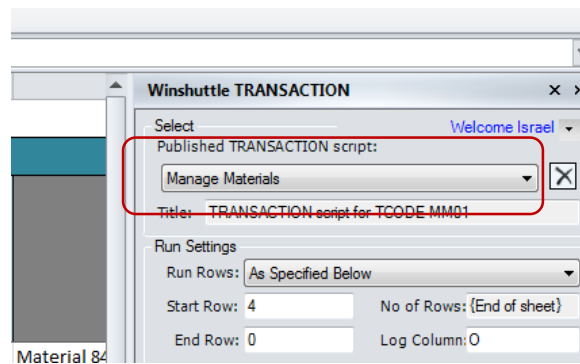
Sno	Enable	Screen	Field Description	Field Name	Field Type	Mapping Type	Value	Note
1	<input checked="" type="checkbox"/>		Log Column				0	
2	<input checked="" type="checkbox"/>							
3	<input checked="" type="checkbox"/>	SAPLHGMM-0060	Initial screen: matl no., industry secto...					
4	<input checked="" type="checkbox"/>		Indicates cursor position on the screen	BDC_CURSOR			RMMG1-MTART	
5	<input checked="" type="checkbox"/>		OK Code for this screen	BDC_OKCODE			/00	



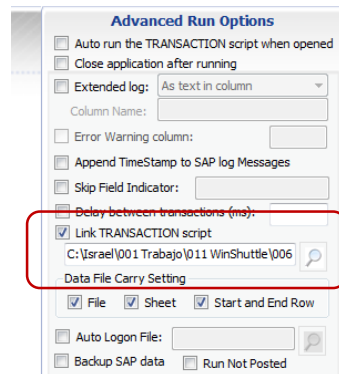
Second improvement

Let's simplify the interface:

- One single “intelligent” script



- And use of the “Link script” functionality

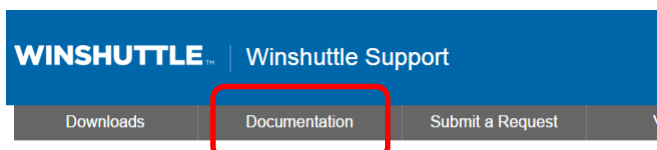


Available resources

Winshuttle Solution Accelerators

MD Design Patterns @ Documentation Portal:

<http://support.winshuttle.com>

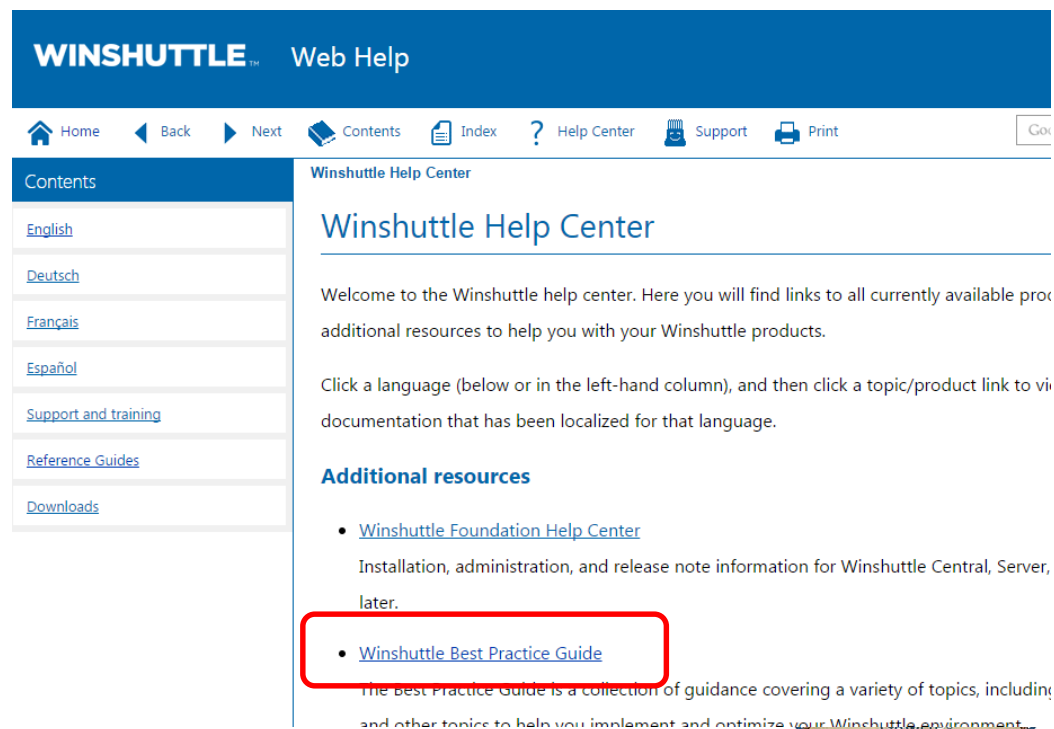


WINSHUTTLE Winshuttle Support

Downloads Documentation Submit a Request

Winshuttle is working to make the Knowledge Base available in German, French, and Spanish, but not all articles are currently available. To look for articles in another language, click the language selector at the top of the page and choose the language. If you want a specific article translated, please leave a comment in the English version of that article.

[Winshuttle Unified Search](#) [Learn more about Winshuttle Unified Search](#)



WINSHUTTLE Web Help

Home Back Next Contents Index ? Help Center Support Print

Contents

- [English](#)
- [Deutsch](#)
- [Français](#)
- [Español](#)
- [Support and training](#)
- [Reference Guides](#)
- [Downloads](#)

Winshuttle Help Center

Winshuttle Help Center

Welcome to the Winshuttle help center. Here you will find links to all currently available product additional resources to help you with your Winshuttle products.

Click a language (below or in the left-hand column), and then click a topic/product link to view documentation that has been localized for that language.

Additional resources

- [Winshuttle Foundation Help Center](#)
Installation, administration, and release note information for Winshuttle Central, Server, and later.
- [Winshuttle Best Practice Guide](#)
The Best Practice Guide is a collection of guidance covering a variety of topics, including installation, administration, and other topics to help you implement and optimize your Winshuttle environment.



Available resources

Accelerators showed today:

- Bulk Material Management

<http://winshuttle-help.s3.amazonaws.com/best-practices/winshuttle-best-practices-design-patterns-bulk-material-management.htm>



Other MD trainings during WUG

Wednesday:

- 11:15-12:00 More about Excel Solutions for Master Data
- 14:15 – 13:00 Search Query and Address Validation
- 15:30 – 16:05 MD Best Practices and Design Patterns Roundtable



Questions?

