

WINSHUTTLE
USER
GROUP **Atlanta 2012**

October 16-17



REI Process Evolution: Enhanced Integration of WinShuttle, Excel, and SharePoint



**Kentner Cottingham
Recreational Equipment, Inc.**



About Me and REI:



WINSHUTTLE
USER
GROUP Atlanta 2012



Quick History on REI/SAP/WinShuttle

- August 2010 Migration
- Use of WinShuttle
- Our developer/runner strategy



WINSHUTTLE
USER GROUP Atlanta 2012



“Process Evolution?”



WINSHUTTLE
USER GROUP Atlanta 2012



“Process Evolution!”

Submit this Request



VBA macros
execute

Item
available in
SharePoint
work log

Runner
executes job
& marks
complete

SharePoint
archives
work



WINSHUTTLE
USER GROUP Atlanta 2012



Submit this PO Maintenance Request

Project Name: D22M Pro Combat SS Q2 item changes

Strongly Recommended:

This note is added to the header text on the PO and records why the change was made. -- Only text on the first line of each PO will be transferred. Limit is 72 characters.

Required

Change will only update the article/PO combination
The only required fields are the ones you will see
(see cell comments for additional details)

Reason for PO change

PO Number

10 digit Article #

Update GROSS cost

Update vendor part number

Update UPC/EAN

Change quantity

Vendor updated UPC and Item Number

4500470345

8314690001

449787-022

886550034197

Vendor updated UPC and Item Number

4500470345

8314690002

449787-022

886550034203

Vendor updated UPC and Item Number

4500470345

8314690003

449787-022

886550034210

Vendor updated UPC and Item Number

4500470345

8314690004

449787-022

886550034227

Vendor updated UPC and Item Number

4500470346

8314690001

449787-477

886550034616

Vendor updated UPC and Item Number

4500470346

8314690002

449787-477

886550034623

Vendor updated UPC and Item Number

4500470346

8314690003

449787-477

886550034630

Vendor updated UPC and Item Number

4500470346

8314690004

449787-477

886550034647

Vendor updated UPC and Item Number

4500470346

8314690005

449787-495

886550034753

Vendor updated UPC and Item Number

4500470346

8314690006

449787-495

886550034760

Vendor updated UPC and Item Number

4500470346

8314690007

449787-495

886550034777

Vendor updated UPC and Item Number

4500470346

8314690008

449787-495

886550034784

Vendor updated UPC and Item Number

4500470346

8314690009

449787-811

886550035590

Vendor updated UPC and Item Number

4500470345

8314690014

449787-811

886550035606

Vendor updated UPC and Item Number

4500470345

8314690015

449787-811

886550035613

Vendor updated UPC and Item Number

4500470345

8314690016

449787-811

886550035620

Vendor updated UPC and Item Number

4500470346

8314690001

449787-022

886550034197

Vendor updated UPC and Item Number

4500470346

8314690002

449787-022

886550034203

Vendor updated UPC and Item Number

4500470346

8314690003

449787-022

886550034210

Vendor updated UPC and Item Number

4500470346

8314690004

449787-022

886550034227

Vendor updated UPC and Item Number

4500470346

8314690005

449787-477

886550034616

Microsoft Excel

Your PO change requests have been submitted and you will receive an email when complete.

You can review your request in the WinShuttle Worklog on the MSR site if needed.

OK



Redefining our Process

- Examine current state
- Going for the big win
- Cumulative savings is HUGE

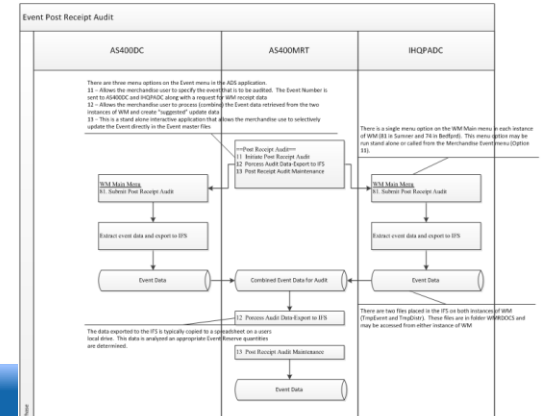
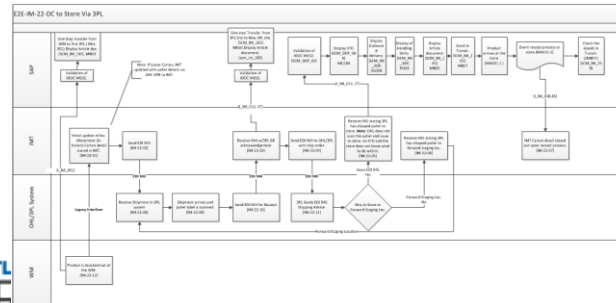
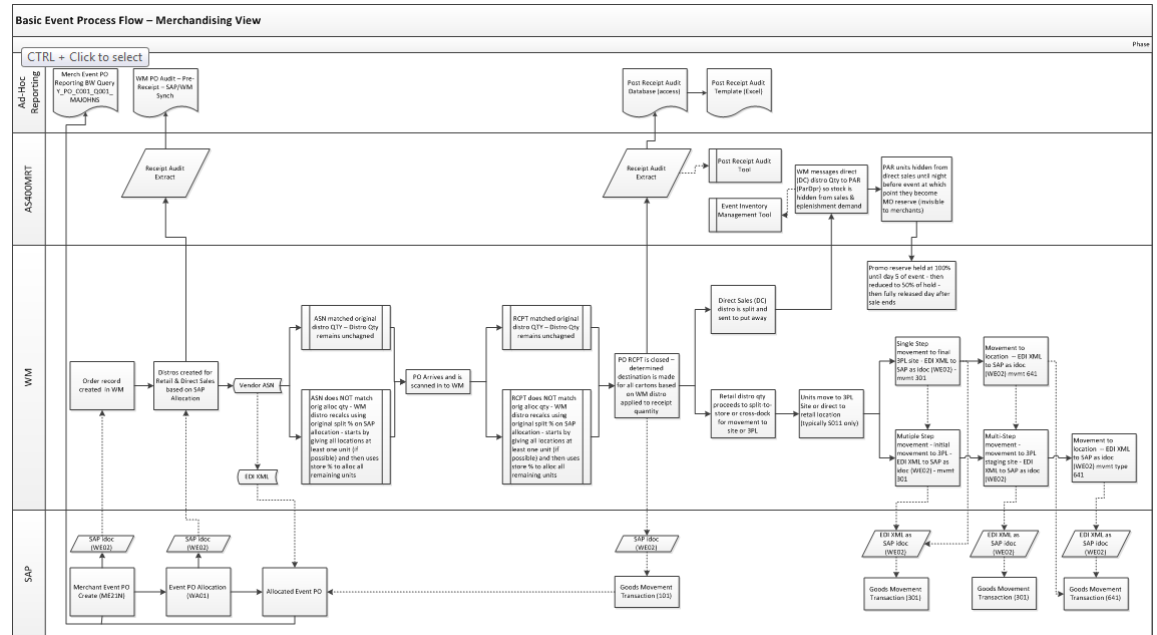


WINSHUTTLE
USER GROUP Atlanta 2012



What the Process Looks Like

- Orders
- Allocations
- Distribution
- Sales!



WINSHUTTLE
USER
GROUP



Problems?



- Confusing
- Time consuming
- Lack of standards
- Missed deadlines
- Poor accountability
- No governance

2012



Rethinking the Process

- Identifying end to end
- Strategic decisions
- Shrinking the change



WINSHUTTLE
USER GROUP Atlanta 2012



Solutions!



- Leverage tools
- Define governed process
- Clear steps
- Clear requirements
- Focus on analysis, not entry



WinShuttle
USER GROUP
Atlanta 2012



Workflow process

- Generate seed documents
- Compulsory 1st “submit”
- Options for review
- Upload
- Job complete



WINSHUTTLE
USER GROUP Atlanta 2012



Project Name:	D59 RED WS allocation
Included Sites:	148,150,151,152,153,154,155
Event Code:	3318
Event Start Date:	11/16/2012

Execution of Simulation Data (default is no review):	Brad	Upload when complete - no review needed
Assortments reviewed by (% status):	Brad	Complete
Strategy & Copy Stores reviewed by (% status):	Brad	Complete

PUSH TO:
USE/ASSIGN DEFAULT STRATEGY OPTIONS
(to rows with no strategy in place)

PUSH TO:
ASSIGN DEFAULT COPY STORE RATIOS
(as entered to the right to rows with no copy info)

Submit all simulation

SAP DATA										USER Optional:	USER Required:		USER Required Strategy Calculation			User Optional: model strat				
ery	Purch Group	DC site	vendor	PO	line #	article	description	Qty on PO	unit	DC reserve qty	Status (work should be complete in SAP before submitting)	Assortment Group (SAP ID)	OPTIONAL: Assortment Group (descriptive text name)	Allocation Strategy	begin date	end date	Alternate Hierarchy MCAT	Merch Mcat (range start)	Merch Mcat (range end)	single art (or range)
12	049	1	RED CORPORATION	4500639718	10	8396130001	Force, BLUE, M	11	EA		choose...	F12D590006	59-F12 DCs + Seattle	Total Sales Units	11/17/2011	12/1/2011				
12	049	1	RED CORPORATION	4500639718	20	8396130002	Force, BLUE, L	7	EA		choose...	F12D590006	59-F12 DCs + Seattle	Total Sales Units	11/17/2011	12/1/2011				
12	049	1	RED CORPORATION	4500639718	30	8396130003	Force, BLUE, XL	9	EA		choose...	F12D590006	59-F12 DCs + Seattle	Total Sales Units	11/17/2011	12/1/2011				
12	049	1	RED CORPORATION	4500639718	40	8396140001	Mutiny, BLUE, M	43	EA	5	choose...	F12D590003	59-F12 Snow Acc Medium	Total Sales Units	11/17/2011	12/1/2011				
12	049	1	RED CORPORATION	4500639718	50	8396140002	Mutiny, BLUE, L	43	EA	5	choose...	F12D590003	59-F12 Snow Acc Medium	Total Sales Units	11/17/2011	12/1/2011				
12	049	1	RED CORPORATION	4500639718	60	8396140003	Mutiny, BLUE, XL	43	EA	5	choose...	F12D590003	59-F12 Snow Acc Medium	Total Sales Units	11/17/2011	12/1/2011				
12	049	1	RED CORPORATION	4500639718	70	8396140004	Mutiny, FURNACE, M	55	EA	6	choose...	F12D590004	59-F12 Snow Acc Small	Total Sales Units	11/17/2011	12/1/2011				
12	049	1	RED CORPORATION	4500639718	80	8396140005	Mutiny, FURNACE, L	83	EA	8	choose...	F12D590004	59-F12 Snow Acc Small	Total Sales Units	11/17/2011	12/1/2011				
12	049	1	RED CORPORATION	4500639718	90	8396140006	Mutiny, FURNACE, XL	45	EA		choose...	F12D590004	59-F12 Snow Acc Small	Total Sales Units	11/17/2011	12/1/2011				
12	049	1	RED CORPORATION	4500639718	100	8246180001	Trace, BLACK MATTE, S	53	EA	5	choose...	F12D590004	59-F12 Snow Acc Small	Total Sales Units	11/17/2011	12/1/2011				
12	049	1	RED CORPORATION	4500639718	110	8246180002	Trace, BLACK MATTE, M	158	EA	20	choose...	F12D590004	59-F12 Snow Acc Small	Total Sales Units	11/17/2011	12/1/2011				
12	049	1	RED CORPORATION	4500639718	120	8246180003	Trace, BLACK MATTE, L	150	EA	20	choose...	F12D590004	59-F12 Snow Acc Small	Total Sales Units	11/17/2011	12/1/2011				
12	049	1	RED CORPORATION	4500639718	130	8246180004	Trace, BLACK MATTE, XL	79	EA	5	choose...	F12D590004	59-F12 Snow Acc Small	Total Sales Units	11/17/2011	12/1/2011				
12	049	1	RED CORPORATION	4500639718	140	8246190001	Hi-Fi With Mips, BLACK MATTE, M	3	EA		choose...	F12D590007	59-F12 DCs only	Total Sales Units	11/17/2011	12/1/2011				
12	049	1	RED CORPORATION	4500639718	150	8246190002	Hi-Fi With Mips, BLACK MATTE, L	4	EA		choose...	F12D590007	59-F12 DCs only	Total Sales Units	11/17/2011	12/1/2011				
12	049	1	RED CORPORATION	4500639718	160	8246190003	Hi-Fi With Mips, BLACK MATTE, XL	3	EA		choose...	F12D590007	59-F12 DCs only	Total Sales Units	11/17/2011	12/1/2011				
12	049	1	RED CORPORATION	4500639718	170	8396150001	Asylum, BLACK PEARL, S	57	EA	5	choose...	F12D590003	59-F12 Snow Acc Medium	Total Sales Units	11/17/2011	12/1/2011				
12	049	1	RED CORPORATION	4500639718	180	8396150002	Asylum, BLACK PEARL, M	105	EA	18	choose...	F12D590003	59-F12 Snow Acc Medium	Total Sales Units	11/17/2011	12/1/2011				
12	049	1	RED CORPORATION	4500639718	190	8396150004	Asylum, GREEN, M	4	EA		choose...	F12D590007	59-F12 DCs only	Total Sales Units	11/17/2011	12/1/2011				
12	049	1	RED CORPORATION	4500639718	200	8396150005	Asylum, GREEN, S	4	EA		choose...	F12D590007	59-F12 DCs only	Total Sales Units	11/17/2011	12/1/2011				
12	049	1	RED CORPORATION	4500639718	210	8396160002	Dritt, MEADOW, M	3	EA		choose...	F12D590007	59-F12 DCs only	Total Sales Units	11/17/2011	12/1/2011				
12	049	1	RED CORPORATION	4500639718	220	8396160003	Dritt, MEADOW, S	3	EA		choose...	F12D590007	59-F12 DCs only	Total Sales Units	11/17/2011	12/1/2011				
12	049	1	RED CORPORATION	4500639718	230	8396170001	Pure, PINK, S	69	EA	5	choose...	F12D590004	59-F12 Snow Acc Small	Total Sales Units	11/17/2011	12/1/2011				
12	049	1	RED CORPORATION	4500639718	240	8396170002	Pure, PINK, M	82	EA	5	choose...	F12D590004	59-F12 Snow Acc Small	Total Sales Units	11/17/2011	12/1/2011				
12	049	1	RED CORPORATION	4500639718	250	8396280001	Avid Grom, FANCLUB, S	37	EA	5	choose...	F12D590005	59-F12 Snow Acc XL	Total Sales Units	11/17/2011	12/1/2011				
12	049	1	RED CORPORATION	4500639718	260	8396280002	Avid Grom, FANCLUB, M	37	EA		choose...	F12D590005	59-F12 Snow Acc XL	Total Sales Units	11/17/2011	12/1/2011				
12	049	2	RED CORPORATION	4500639719	10	8396130001	Force, BLUE, M	5	EA		choose...	F12D590006	59-F12 DCs + Seattle	Total Sales Units	11/17/2011	12/1/2011				
12	049	2	RED CORPORATION	4500639719	20	8396130002	Force, BLUE, L	3	EA		choose...	F12D590006	59-F12 DCs + Seattle	Total Sales Units	11/17/2011	12/1/2011				
12	049	2	RED CORPORATION	4500639719	30	8396130003	Force, BLUE, XL	4	EA		choose...	F12D590006	59-F12 DCs + Seattle	Total Sales Units	11/17/2011	12/1/2011				
12	049	2	RED CORPORATION	4500639719	40	8396140001	Mutiny, BLUE, M	14	EA		choose...	F12D590003	59-F12 Snow Acc Medium	Total Sales Units	11/17/2011	12/1/2011				
12	049	2	RED CORPORATION	4500639719	50	8396140002	Mutiny, BLUE, L	14	EA		choose...	F12D590003	59-F12 Snow Acc Medium	Total Sales Units	11/17/2011	12/1/2011				
12	049	2	RED CORPORATION	4500639719	60	8396140003	Mutiny, BLUE, XL	14	EA		choose...	F12D590003	59-F12 Snow Acc Medium	Total Sales Units	11/17/2011	12/1/2011				
12	049	2	RED CORPORATION	4500639719	70	8396140004	Mutiny, FURNACE, M	20	EA		choose...	F12D590004	59-F12 Snow Acc Small	Total Sales Units	11/17/2011	12/1/2011				
12	049	2	RED CORPORATION	4500639719	80	8396140005	Mutiny, FURNACE, L	30	EA		choose...	F12D590004	59-F12 Snow Acc Small	Total Sales Units	11/17/2011	12/1/2011				
12	049	2	RED CORPORATION	4500639719	90	8396140006	Mutiny, FURNACE, XL	16	EA		choose...	F12D590004	59-F12 Snow Acc Small	Total Sales Units	11/17/2011	12/1/2011				
12	049	2	RED CORPORATION	4500639719	100	8246180001	Trace, BLACK MATTE, S	19	EA		choose...	F12D590004	59-F12 Snow Acc Small	Total Sales Units	11/17/2011	12/1/2011				
12	049	2	RED CORPORATION	4500639719	110	8246180002	Trace, BLACK MATTE, M	58	EA	5	choose...	F12D590004	59-F12 Snow Acc Small	Total Sales Units	11/17/2011	12/1/2011				
12	049	2	RED CORPORATION	4500639719	120	8246180003	Trace, BLACK MATTE, L	54	EA	5	choose...	F12D590004	59-F12 Snow Acc Small	Total Sales Units	11/17/2011	12/1/2011				
12	049	2	RED CORPORATION	4500639719	130	8246180004	Trace, BLACK MATTE, XL	29	EA		choose...	F12D590004	59-F12 Snow Acc Small	Total Sales Units	11/17/2011	12/1/2011				
12	049	2	RED CORPORATION	4500639719	140	8246190001	Hi-Fi With Mips, BLACK MATTE, M	3	EA		choose...	F12D590007	59-F12 DCs only	Total Sales Units	11/17/2011	12/1/2011				
12	049	2	RED CORPORATION	4500639719	150	8246190002	Hi-Fi With Mips, BLACK MATTE, L	3	EA		choose...	F12D590007	59-F12 DCs only	Total Sales Units	11/17/2011	12/1/2011				
12	049	2	RED CORPORATION	4500639719	160	8246190003	Hi-Fi With Mips, BLACK MATTE, XL	3	EA		choose...	F12D590007	59-F12 DCs only	Total Sales Units	11/17/2011	12/1/2011				
12	049	2	RED CORPORATION	4500639719	170	8396150001	Asylum, BLACK PEARL, S	18	EA		choose...	F12D590003	59-F12 Snow Acc Medium	Total Sales Units	11/17/2011	12/1/2011				
12	049	2	RED CORPORATION	4500639719	180	8396150002	Asylum, BLACK PEARL, M	34	EA		choose...	F12D590003	59-F12 Snow Acc Medium	Total Sales Units	11/17/2011	12/1/2011				
12	049	2	RED CORPORATION	4500639719	190	8396150004	Asylum, GREEN, M	4	EA		choose...	F12D590007	59-F12 DCs only	Total Sales Units	11/17/2011	12/1/2011				
12	049	2	RED CORPORATION	4500639719	200	8396150005	Asylum, GREEN, S	4	EA		choose...	F12D590007	59-F12 DCs only	Total Sales Units	11/17/2011	12/1/2011				
12	049	2	RED CORPORATION	4500639719	210	8396160002	Dritt, MEADOW, M	2	EA		choose...	F12D590007	59-F12 DCs only	Total Sales Units	11/17/2011	12/1/2011				
12	049	2	RED CORPORATION	4500639719	220	8396160003	Dritt, MEADOW, S	2	EA		choose...	F12D590007	59-F12 DCs only	Total Sales Units	11/17/2011	12/1/2011				
12	049	2	RED CORPORATION	4500639719	230	8396170001	Pure, PINK, S	27	EA		choose...	F12D590004	59-F12 Snow Acc Small	Total Sales Units	11/17/2011	12/1/2011				
12	049	2	RED CORPORATION	4500639719	240	8396170002	Pure, PINK, M	32	EA		choose...	F12D590004	59-F12 Snow Acc Small	Total Sales Units	11/17/2011	12/1/2011				
12	049	2	RED CORPORATION	4500639719	250	8396280001	Avid Grom, FANCLUB, S	13	EA		choose...	F12D590005	59-F12 Snow Acc XL	Total Sales Units	11/17/2011	12/1/2011				
12	049	2	RED CORPORATION	4500639719	260	8396280002	Avid Grom, FANCLUB, M	13	EA		choose...	F12D590005	59-F12 Snow Acc XL	Total Sales Units	11/17/2011	12/1/2011				



The WinShuttle Process Begins

- Proof entries for validity with WinShuttle
- Convert to allocation ready data table



WINSHUTTLE
USER GROUP Atlanta 2012



adjust DC reserve or change statistical plan ratios for an item, place cursor on an item row and...

RE-CALC retail site quantities for this item

Log Winshuttle RUNNER for TRANSACTION 10.3
PreAlloc_upload_3_upload-it.TdF
9/10/2012 2:13:17 PM
ECP-100_rkenna3

Number of Errors: 0

Create Alloc. Table (log 3)

Merchant Reference (PO Item information)							Merchant Reference		for Merchant reference/review				WS REQUIRED (LOOP INDICATORS)				
PROMO #	Vendor	Purchase Order #	item line	article #	description	req for DC hold	SAP Alloc QTY	Site Allocation Sum	Site	QTY	Repleni sh unit (EA/PA C)	SAP statistica l plan ratio	sim/data column	WS next Art. (g/h)	Next PO? (H/D)	copy stores exist?	bl
Item row D: See log below	3318	RED CORPORATION	4500639718	20	8396130002	Force, BLUE, L	0	7	10	EA			SIM	Y	D	Y	
Item row N: See log below	3318	RED CORPORATION	4500639718	20	8396130002	Force, BLUE, L			11	EA			SIM	N	D	Y	
Item row D: See log below	3318	RED CORPORATION	4500639718	20	8396130002	Force, BLUE, L	0	7	10	EA			DATA	Y	D	Y	
Item row N: See log below	3318	RED CORPORATION	4500639718	20	8396130002	Force, BLUE, L			11	EA			DATA	N	D	Y	
Item row D: See log below	3318	RED CORPORATION	4500639718	30	8396130003	Force, BLUE, XL	0	9	10	EA			SIM	Y	D	Y	
Item row N: See log below	3318	RED CORPORATION	4500639718	30	8396130003	Force, BLUE, XL			11	EA			SIM	N	D	Y	
Item row D: See log below	3318	RED CORPORATION	4500639718	30	8396130003	Force, BLUE, XL	0	9	10	EA			DATA	Y	D	Y	
Item row N: See log below	3318	RED CORPORATION	4500639718	30	8396130003	Force, BLUE, XL			11	EA			DATA	N	D	Y	
Item row D: See log below	3318	RED CORPORATION	4500639718	40	8396140001	Mutiny, BLUE, M	5	43	10	EA			SIM	Y	D	Y	
Item row N: See log below	3318	RED CORPORATION	4500639718	40	8396140001	Mutiny, BLUE, M			11	EA			SIM	N	D	Y	
Item row N: See log below	3318	RED CORPORATION	4500639718	40	8396140001	Mutiny, BLUE, M			12	EA			SIM	N	D	Y	
Item row N: See log below	3318	RED CORPORATION	4500639718	40	8396140001	Mutiny, BLUE, M			13	EA			SIM	N	D	Y	
Item row N: See log below	3318	RED CORPORATION	4500639718	40	8396140001	Mutiny, BLUE, M			14	EA			SIM	N	D	Y	
Item row N: See log below	3318	RED CORPORATION	4500639718	40	8396140001	Mutiny, BLUE, M			16	EA			SIM	N	D	Y	
Item row N: See log below	3318	RED CORPORATION	4500639718	40	8396140001	Mutiny, BLUE, M			17	EA			SIM	N	D	Y	
Item row N: See log below	3318	RED CORPORATION	4500639718	40	8396140001	Mutiny, BLUE, M			18	EA			SIM	N	D	Y	
Item row N: See log below	3318	RED CORPORATION	4500639718	40	8396140001	Mutiny, BLUE, M			19	EA			SIM	N	D	Y	
Item row N: See log below	3318	RED CORPORATION	4500639718	40	8396140001	Mutiny, BLUE, M			20	EA			SIM	N	D	Y	
Item row N: See log below	3318	RED CORPORATION	4500639718	40	8396140001	Mutiny, BLUE, M			21	EA			SIM	N	D	Y	
Item row N: See log below	3318	RED CORPORATION	4500639718	40	8396140001	Mutiny, BLUE, M			22	EA			SIM	N	D	Y	
Item row N: See log below	3318	RED CORPORATION	4500639718	40	8396140001	Mutiny, BLUE, M			24	EA			SIM	N	D	Y	
Item row D: See log below	3318	RED CORPORATION	4500639718	40	8396140001	Mutiny, BLUE, M	5	43	10	EA			DATA	Y	D	Y	
Item row N: See log below	3318	RED CORPORATION	4500639718	40	8396140001	Mutiny, BLUE, M			11	EA			DATA	N	D	Y	
Item row N: See log below	3318	RED CORPORATION	4500639718	40	8396140001	Mutiny, BLUE, M			12	EA			DATA	N	D	Y	
Item row N: See log below	3318	RED CORPORATION	4500639718	40	8396140001	Mutiny, BLUE, M			13	EA			DATA	N	D	Y	
Item row N: See log below	3318	RED CORPORATION	4500639718	40	8396140001	Mutiny, BLUE, M			14	EA			DATA	N	D	Y	
Item row N: See log below	3318	RED CORPORATION	4500639718	40	8396140001	Mutiny, BLUE, M			16	EA			DATA	N	D	Y	
Item row N: See log below	3318	RED CORPORATION	4500639718	40	8396140001	Mutiny, BLUE, M			17	EA			DATA	N	D	Y	
Item row N: See log below	3318	RED CORPORATION	4500639718	40	8396140001	Mutiny, BLUE, M			18	EA			DATA	N	D	Y	
Item row N: See log below	3318	RED CORPORATION	4500639718	40	8396140001	Mutiny, BLUE, M			19	EA			DATA	N	D	Y	
Item row N: See log below	3318	RED CORPORATION	4500639718	40	8396140001	Mutiny, BLUE, M			20	EA			DATA	N	D	Y	
Item row N: See log below	3318	RED CORPORATION	4500639718	40	8396140001	Mutiny, BLUE, M			21	EA			DATA	N	D	Y	
Item row N: See log below	3318	RED CORPORATION	4500639718	40	8396140001	Mutiny, BLUE, M			22	EA			DATA	N	D	Y	
Item row N: See log below	3318	RED CORPORATION	4500639718	40	8396140001	Mutiny, BLUE, M			24	EA			DATA	N	D	Y	
Item row D: See log below	3318	RED CORPORATION	4500639718	50	8396140002	Mutiny, BLUE, L	5	43	10	EA			SIM	Y	D	Y	



WINSHUTTLE USER GROUP Atlanta 2012



Display Allocation Table : Item Overview

Sources of Supply Item DC Strat

Allocation Table 155180 EVENT ZPUR, PO# 4500639718

Delivery phase default

Site Delivery Date D 11/15/20
DC Delivery Date D

Items

Item	Article	Article	Planned ...	Un...
40	8396140001	Mutiny	6	
50	8396140002	Mutiny	5	
60	8396140003	Mutiny	1	
70	8396140004	Mutiny	1	
80	8396140005	Mutiny	1	
90	8396140006	Mutiny	1	
100	8246180001	Trace,	1	
110	8246180002	Trace,	3	43EA
120	8246180003	Trace, BL	1	
130	8246180004	Trace, BLACK MATTE, XL	4	43EA
140	8246190001	Hi-Fi With Mips, BLACK MATTE, M	3	
150	8246190002	Hi-Fi With Mips, BLACK MATTE, L	1	55EA
160	8246190003	Hi-Fi With Mips, BLACK MATTE, XL	1	83EA
170	8396150001	Asylum, BLACK PEARL, S	1	45EA
				53EA
				158EA
				150EA
				79EA
				3EA
				4EA
				3EA
				57EA

Sites in Item

Site	Planned Quan...	Requested quantity
10	6	
11	5	
12	1	
13	1	
14	1	
16	3	
17	1	
18	4	
19	3	
20	1	
21	1	
22	1	

Site 10 0010

Item 40



adjust DC reserve or change statistical plan ratios for an item, place cursor on an item row and...
RE-CALC retail site quantities for this item

Merchant Reference	for Merchant reference/review				WS REQUIRED (LOOP INDICATORS)			copy stores exist?	bl	
	SAP Alloc QTY	Site Allocation Sum	Site	QTY	Repleni sh unit (EA/PA C)	SAP statistica l plan ratio	sim/data column			WS next Art. (y/n)
0	7		10	EA			SIM	Y	D	Y
0	7	7	10	5 EA	1009	DATA	Y	D	Y	
0	9		10	EA			SIM	Y	D	Y
0	9	9	10	7 EA	1009	DATA	Y	D	Y	
5	43		10	EA			SIM	Y	D	Y
			11	EA			SIM	N	D	Y
			12	EA			SIM	N	D	Y
			13	EA			SIM	N	D	Y
			14	EA			SIM	N	D	Y
			16	EA			SIM	N	D	Y
			17	EA			SIM	N	D	Y
			18	EA			SIM	N	D	Y
			19	EA			SIM	N	D	Y
			20	EA			SIM	N	D	Y
			21	EA			SIM	N	D	Y
			22	EA			SIM	N	D	Y
			24	EA			SIM	N	D	Y
5	43	13	10	6 EA	1009	DATA	Y	D	Y	
			11	5 EA	376	DATA	N	D	Y	
			12	1 EA	67	DATA	N	D	Y	
			13	1 EA	82	DATA	N	D	Y	
			14	1 EA	67	DATA	N	D	Y	
			16	3 EA	160	DATA	N	D	Y	
			17	1 EA	79	DATA	N	D	Y	
			18	4 EA	277	DATA	N	D	Y	
			19	3 EA	157	DATA	N	D	Y	
			20	1 EA	140	DATA	N	D	Y	
			21	1 EA	66	DATA	N	D	Y	
			22	1 EA	66	DATA	N	D	Y	
			24	1 EA	62	DATA	N	D	Y	
5	43		10	EA			SIM	Y	D	Y



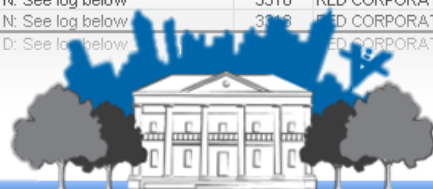
My review is complete.

Submit request for Allocations to be uploaded.

adjust DC reserve or change statistical plan ratios for an item, place cursor on an item row and...

RE-CALC retail site quantities for this item

Create Alloc. Table (log 3)	Merchant Reference (PO Item information)						req for DC hold	Merchant Reference		for Merchant reference/review				WS REQUIRED (LOOP INDICATORS)			copy stores exist?	bl
	PROMO #	Vendor	Purchase Order #	item line	article #	description		SAP Alloc QTY	Site Allocation Sum	Site	QTY	Repleni sh unit (EA/PA C)	SAP statistica l plan ratio	sim/data column	WS next Art. (g/h)	Next PO? (H/D)		
Item row D: See log below	3318	RED CORPORATION	4500639718	20	8396130002	Force, BLUE, L	0	7		10	EA	SIM	Y	D	Y			
Item row N: See log below	3318	RED CORPORATION	4500639718	20	8396130002	Force, BLUE, L				11	EA	SIM	N	D	Y			
Item row D: See log below	3318	RED CORPORATION	4500639718	20	8396130002	Force, BLUE, L	0	7	7	10	5 EA	1009 DATA	Y	D	Y			
Item row N: See log below	3318	RED CORPORATION	4500639718	20	8396130002	Force, BLUE, L				11	2 EA	376 DATA	N	D	Y			
Item row D: See log below	3318	RED CORPORATION	4500639718	30	8396130003	Force, BLUE, XL	0	9		10	EA	SIM	Y	D	Y			
Item row N: See log below	3318	RED CORPORATION	4500639718	30	8396130003	Force, BLUE, XL				11	EA	SIM	N	D	Y			
Item row D: See log below	3318	RED CORPORATION	4500639718	30	8396130003	Force, BLUE, XL	0	9	9	10	7 EA	1009 DATA	Y	D	Y			
Item row N: See log below	3318	RED CORPORATION	4500639718	30	8396130003	Force, BLUE, XL				11	2 EA	376 DATA	N	D	Y			
Item row D: See log below	3318	RED CORPORATION	4500639718	40	8396140001	Mutiny, BLUE, M	5	43		10	EA	SIM	Y	D	Y			
Item row N: See log below	3318	RED CORPORATION	4500639718	40	8396140001	Mutiny, BLUE, M				11	EA	SIM	N	D	Y			
Item row N: See log below	3318	RED CORPORATION	4500639718	40	8396140001	Mutiny, BLUE, M				12	EA	SIM	N	D	Y			
Item row N: See log below	3318	RED CORPORATION	4500639718	40	8396140001	Mutiny, BLUE, M				13	EA	SIM	N	D	Y			
Item row N: See log below	3318	RED CORPORATION	4500639718	40	8396140001	Mutiny, BLUE, M				14	EA	SIM	N	D	Y			
Item row N: See log below	3318	RED CORPORATION	4500639718	40	8396140001	Mutiny, BLUE, M				16	EA	SIM	N	D	Y			
Item row N: See log below	3318	RED CORPORATION	4500639718	40	8396140001	Mutiny, BLUE, M				17	EA	SIM	N	D	Y			
Item row N: See log below	3318	RED CORPORATION	4500639718	40	8396140001	Mutiny, BLUE, M				18	EA	SIM	N	D	Y			
Item row N: See log below	3318	RED CORPORATION	4500639718	40	8396140001	Mutiny, BLUE, M				19	EA	SIM	N	D	Y			
Item row N: See log below	3318	RED CORPORATION	4500639718	40	8396140001	Mutiny, BLUE, M				20	EA	SIM	N	D	Y			
Item row N: See log below	3318	RED CORPORATION	4500639718	40	8396140001	Mutiny, BLUE, M				21	EA	SIM	N	D	Y			
Item row N: See log below	3318	RED CORPORATION	4500639718	40	8396140001	Mutiny, BLUE, M				22	EA	SIM	N	D	Y			
Item row N: See log below	3318	RED CORPORATION	4500639718	40	8396140001	Mutiny, BLUE, M				24	EA	SIM	N	D	Y			
Item row D: See log below	3318	RED CORPORATION	4500639718	40	8396140001	Mutiny, BLUE, M	5	43	13	10	6 EA	1009 DATA	Y	D	Y			
Item row N: See log below	3318	RED CORPORATION	4500639718	40	8396140001	Mutiny, BLUE, M				11	5 EA	376 DATA	N	D	Y			
Item row N: See log below	3318	RED CORPORATION	4500639718	40	8396140001	Mutiny, BLUE, M				12	1 EA	67 DATA	N	D	Y			
Item row N: See log below	3318	RED CORPORATION	4500639718	40	8396140001	Mutiny, BLUE, M				13	1 EA	82 DATA	N	D	Y			
Item row N: See log below	3318	RED CORPORATION	4500639718	40	8396140001	Mutiny, BLUE, M				14	1 EA	67 DATA	N	D	Y			
Item row N: See log below	3318	RED CORPORATION	4500639718	40	8396140001	Mutiny, BLUE, M				16	3 EA	160 DATA	N	D	Y			
Item row N: See log below	3318	RED CORPORATION	4500639718	40	8396140001	Mutiny, BLUE, M				17	1 EA	79 DATA	N	D	Y			
Item row N: See log below	3318	RED CORPORATION	4500639718	40	8396140001	Mutiny, BLUE, M				18	4 EA	277 DATA	N	D	Y			
Item row N: See log below	3318	RED CORPORATION	4500639718	40	8396140001	Mutiny, BLUE, M				19	3 EA	157 DATA	N	D	Y			
Item row N: See log below	3318	RED CORPORATION	4500639718	40	8396140001	Mutiny, BLUE, M				20	1 EA	140 DATA	N	D	Y			
Item row N: See log below	3318	RED CORPORATION	4500639718	40	8396140001	Mutiny, BLUE, M				21	1 EA	66 DATA	N	D	Y			
Item row N: See log below	3318	RED CORPORATION	4500639718	40	8396140001	Mutiny, BLUE, M				22	1 EA	66 DATA	N	D	Y			
Item row N: See log below	3318	RED CORPORATION	4500639718	40	8396140001	Mutiny, BLUE, M				24	1 EA	62 DATA	N	D	Y			
Item row D: See log below	3318	RED CORPORATION	4500639718	50	8396140002	Mutiny, BLUE, L	5	43		10	EA	SIM	Y	D	Y			



WINSHUTTLE USER GROUP Atlanta 2012



Upload Scripts & Archive Data File

- Validate and update Purchase Order
- Upload allocation table
- Re-verify order
- Job is complete



WINSHUTTLE
USER GROUP Atlanta 2012



Recap of Process Flow

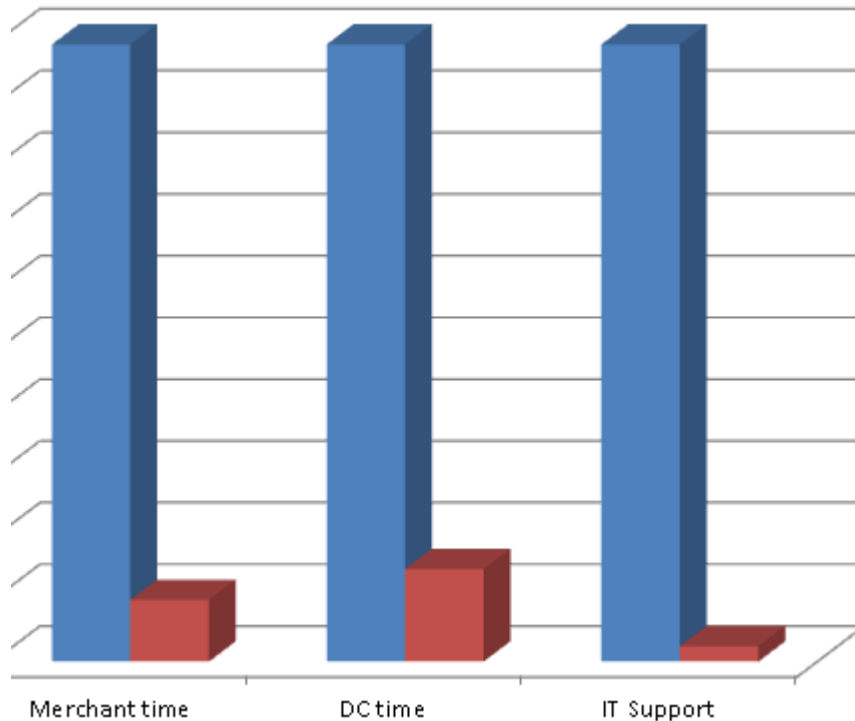
- User friendly process
- Clear Steps
- Shifted focus to analysis
- Confidence in execution
- Less is more
- User adoption and scalability



WINSHUTTLE
USER GROUP Atlanta 2012



The Results (YTD)



- 2656 order allocations built
- 2500+ Merchant hours recovered
- 400+ DC partner hours recovered
- IT support virtually eliminated
- “Missed” allocations reduced by 93%
- and more...



WINSHUTTLE
USER GROUP Atlanta 2012



Development Notes

- Process
- User Tools
- VBA
- Winshuttle



WINSHUTTLE
USER GROUP Atlanta 2012



Define the Entire Process

- Eliminating gaps and room for error
- Maximize automation
- Pre-filling as much data as possible
- Managing the steps



WINSHUTTLE
USER GROUP Atlanta 2012



Developing the User Tools

- Design for ease of use user entry
- Retain familiarity
- Complex VBA is not a requirement!



WINSHUTTLE
USER GROUP Atlanta 2012



Developing VBA

- Make it work for you
- User vs data sheet requirements
- Awesome user experience



WINSHUTTLE
USER GROUP Atlanta 2012



Developing WinShuttle Scripts

- Think differently about SAP screens
- Validate parameters
- Dream Big



WINSHUTTLE
USER GROUP Atlanta 2012



Round up...

- Process
- Workflow
- VBA
- Scripting

Sno.	Enab.	Screen	Field Description	Field Name	Mapping Type	Value	Notes
88	<input checked="" type="checkbox"/>	SAPSP02-0301	POPUP TO DECIDE WITH MESSA...				
89	<input checked="" type="checkbox"/>		OK Code for the screen	BDC_OKCODE		=OPT1	yes rec'd
90	<input checked="" type="checkbox"/>	SAPHE01A-0152	Overview Sites in All				let
91	<input checked="" type="checkbox"/>		OK Code for the screen	BDC_OKCODE		/00	
92	<input checked="" type="checkbox"/>		OK Code for the screen	BDC_OKCODE		/00	
93	<input checked="" type="checkbox"/>	SAPHE01A-0152	Overview Sites in All				exit
94	<input checked="" type="checkbox"/>		Site	RW04A-F3LM		Y	enter site for...
95	<input checked="" type="checkbox"/>		OK Code for the screen	BDC_OKCODE		/00	
96	<input checked="" type="checkbox"/>	SAPHE01A-0152	Overview Sites in Alloc. Tbl Item (...)				
97	<input checked="" type="checkbox"/>		Calculated qty	ALF3-PRNGZ(01)		Z	return alloc q...
98	<input checked="" type="checkbox"/>		stat plan	ALF3-BEWZAR(01)		AB	return alloc q...
99	<input checked="" type="checkbox"/>						
100	<input checked="" type="checkbox"/>	SAPHE01A-0152	Overview Sites in Alloc. Tbl Item (...)				
101	<input checked="" type="checkbox"/>		Site	RW04A-F3LM		Y	have to ente...
102	<input checked="" type="checkbox"/>		OK Code for the screen	BDC_OKCODE		/00	
103	<input checked="" type="checkbox"/>	SAPHE01A-0152	Overview Sites in Alloc. Tbl Item (...)				



WINSHUTTLE
USER GROUP Atlanta 2012



Questions/Discussion



**Kentner Cottingham
Recreational Equipment, Inc.
kcottin@rei.com**

