

# **SAP Plant Maintenance (PM) Process Innovation and Related Winshuttle Best Practices**

Brandi Czerniewski,  
ConocoPhillips



WINSHUTTLE  
USER  
GROUP

# About ConocoPhillips

- Integrated Energy Company
  - Exploration & Production
  - Refining, Marketing, Supply & Transportation
  - Natural Gas Gathering, Processing & Marketing
  - Chemicals & Plastics
- 29,600 Employees in more than 30 countries



WINSHUTTLE  
USER  
GROUP

# About Brandi Czerniewski

- Hired in May 2006 as Analyst on TMT Technology Integration Project
- SAP PM Analyst: August 2007 – March 2009
- SAP PS Analyst: March 2009 – 2011
- SAP Repositioning Effort – 2011 - Present
- Lead COP Bartlesville Women's Network



# ConocoPhillips WinShuttle Implementation

- **CENTRAL 10.1**
  - License Management
  - Reporting
  - Template Storage
  - Policies and Roles
- **TRANSACTION 10.1**
  - 3 North America
  - 1 Europe/Middle East/Africa
  - 1 Asia Pacific



- **RUNNER Users (62)**
  - Downstream
  - Upstream
  - Corporate Staffs

**WINSHUTTLE**  
**USER**  
**GROUP**

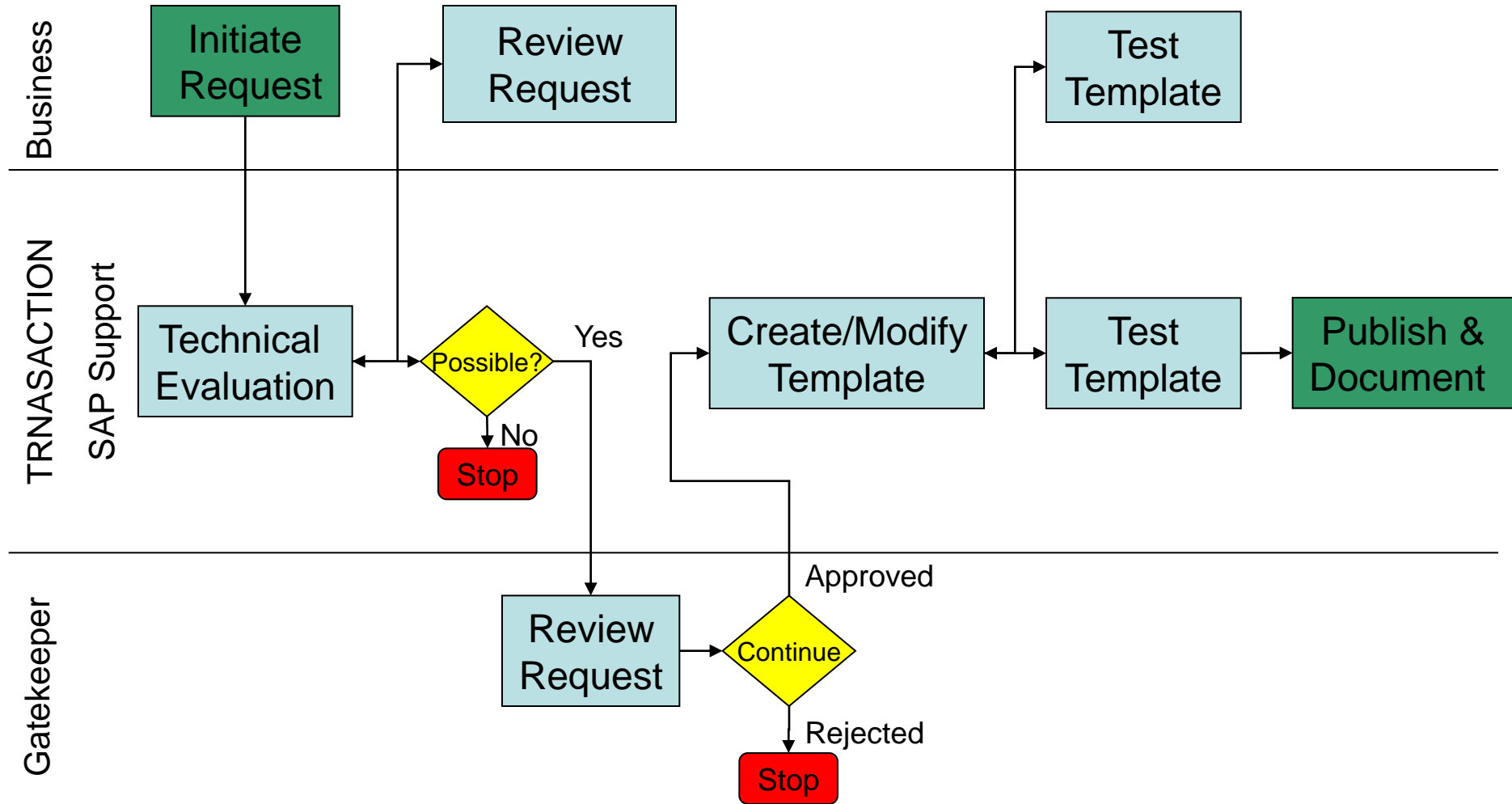


# Supporting Processes

- License Approval
- Template Approval
  - New
  - Changes
- Template Testing
- Template Design & Storage

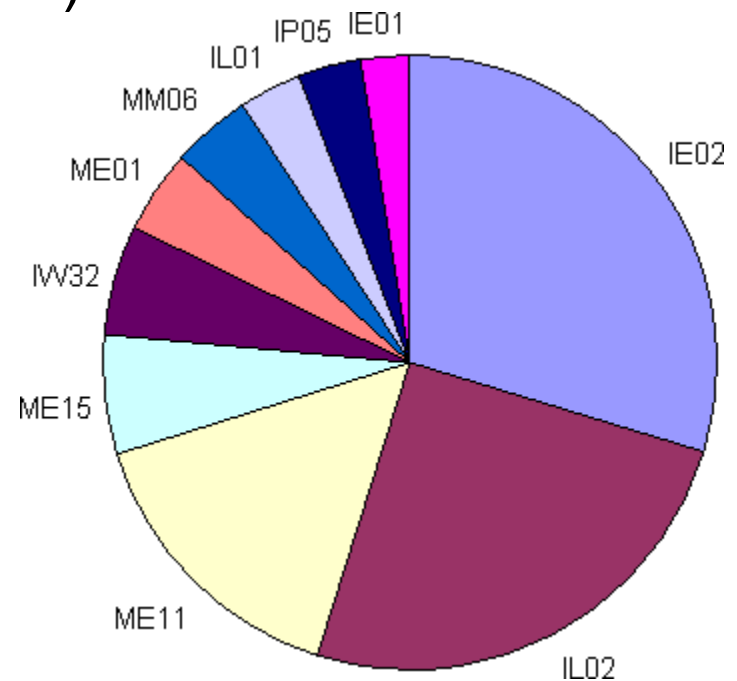
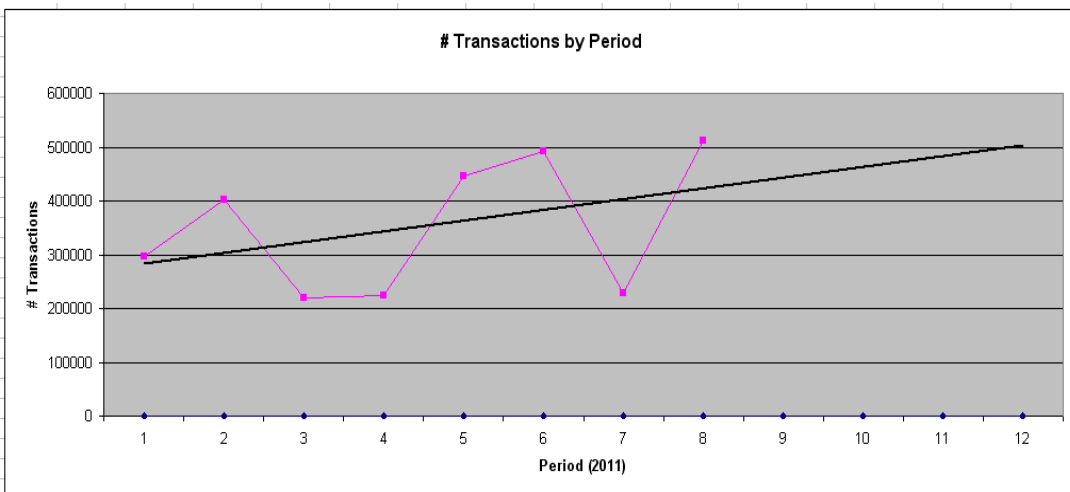
| A  | B                                       | C                                   | D                                | E                                    | F   | G  | H   | I   | J                                      |
|--|---|-------------------------------------|----------------------------------|--------------------------------------|---|--|---|---|--|
| <p>The purpose of this template is to change existing Material BOM's by adding, deleting, or changing quantity of BOM components.</p> <p>Yellow row is an example row, no need to remove.</p> <p>Do <b>NOT</b> re-order columns in the spreadsheet.</p> <p>Required Fields are shown in <b>RED</b></p> <p>/ is a Skip Field Indicator, use this field to <b>SKIP</b> fields. If you use a blank it will <b>blank out</b> data in SAP. To insert a / in a cell double click on the cell first, then copy and paste as necessary.</p> <p>For more information see the <b>Instructions/Details</b> tab below.</p> |   |                                     |                                  |                                      |   |  |   |   |  |
| Material Number<br>RC29N-MATNR<br><b>Required</b>  | Plant<br>RC29N-WERKS<br><b>Required</b> | Delete BOM component<br>RC29P-SELID | New BOM component<br>RC29P-SELID | New Item Category<br>RC29P-POSTP(02) | New Component quantity<br>RC29P-MENGE(01) | New Component unit of measure<br>RC29P-MEINS(01) | New BOM Item Text (Line 1)<br>RC29P-POTX1 | New BOM item text (line 2)<br>RC29P-POTX2 | Formula Column<br><b>DO NOT DELETE</b> |
| 10122280   | R101                                    | 10710813                            | 10710813                         | /                                    | 3   | ea   | New text                                  | New text                                  | R                                      |
| 10122280   | R101                                    | /                                   | 10364599                         | N                                    |   | 2 EA   | New text                                  | New text                                  | A                                      |
| 10122280   | R101                                    | 10364599                            | /                                | /                                    | /   | /  | /   | /   | D                                      |

# Process Flow



# ConocoPhillips WinShuttle Statistics


- Loads run on 14 environments
- Used on 125 transactions
- 3,041,227 records uploaded (since 1/2011)
- Saved 52,684 hours (since 1/2011)
- PM Records Total: 1,697,859





# Mid-Continent Business Unit Cleanup

- 12 Sites over Lower 48
- 50 K – 100 K records per site
- Defined order for 10 – 15 templates

| A     | B   | C      | D         |
|-------|---|--------|-----------|
| Order | Template  | System | # Rows    |
| 1     | IE02 - Delete Class   | PRD    | 10451     |
| 2     | IL02 - Alternative Label and Move   | PRD    | 577       |
| 3     | IL01 - Create Functional All Fields   | PRD    | 611       |
| 4     | IL02 - Change Functional Location   | PRD    | 1013      |
| 5     | IE01 - Create Equipment Level 1   | PRD    | 2946      |
| 6     | IE01 - Create Equipment Level 2   | PRD    | 501       |
| 7     | IE01 - Create Equipment Level 3   | PRD    | 88        |
| 8     | IE01 - Create Equipment Level 4   | PRD    | 10        |
| 9     | IE01 - Create Equipment Level 5   | PRD    | 28        |
| 10    | IE02 - Change Equipment Level   | PRD    | 3156      |
| 11    | IE02 - Add Class  | PRD    | 7665      |
| 12    | IE02 - Change Characteristic Values   | PRD    | 32509     |
| 13    | Fix Inheritance Load  | PRD    | 486       |
| 14    | CHANGE VEHICLE LOAD   |        |           |
|       |  |        | 60,041.00 |

[Example 1](#)  
[Example 2](#)

# MCBU (Continued)

|       | A   | B  | C  | D                          | E   |
|-------|---|--|--|----------------------------|---|
|       | This template has <b>two</b> published shuttle files in it.<br>"Change Characteristic Values Unique Name" and "Change Characteristic Values Non-Unique Name" (Example of non unique name: Speed, and Speed Unit). <b>The "Non-Unique" template runs in the you can not be trying to do anything else while it runs.</b> |  |  |                            |   |
| 1     | To use this template:   |  |  |                            |   |
| 2     | <b>Equipment Number<br/>Required</b>  | <b>Characteristic Description<br/>Required</b> | <b>Characteristic Value<br/>Required</b> |                            |   |
| 3     | 11799479  | SPEED  | 1800 RPM                                 |                            | IN.   |
| 30640 | 12067980  | MAXIMUM RATED RPM                              | 1400                                     | Equipment 12067980 changed | - No batch input data for screen SAPMSSYO 0120- Contr |
| 30641 | 12067980  | NUMBER OF STAGES                               | 1  | Equipment 12067980 changed | - No batch input data for screen SAPMSSYO 0120- Contr |
| 30642 | 12067980  | NUMBER OF THROWS                               | 2  | Equipment 12067980 changed | - No batch input data for screen SAPMSSYO 0120- Contr |
| 30643 | 12067999  | Diameter, Primary                              | 19                                       | Equipment 12067999 changed | - No batch input data for screen SAPMSSYO 0120- Contr |
| 30644 | 12067999  | Separator/Dehydrator Combo                     | YES                                      | Equipment 12067999 changed | - No batch input data for screen SAPMSSYO 0120- Contr |
| 30645 | 12068016  | Current  | 125                                      | Equipment 12068016 changed | - No batch input data for screen SAPMSSYO 0120- Contr |
| 30646 | 12068016  | Voltage  | 460                                      | Equipment 12068016 changed | - No batch input data for screen SAPMSSYO 0120- Contr |
| 30647 | 12068031  | NUMBER OF STAGES                               | 1  | Equipment 12068031 changed | - No batch input data for screen SAPMSSYO 0120- Contr |
| 30648 | 12068104  | NUMBER OF STAGES                               | 1  | Equipment 12068104 changed | - No batch input data for screen SAPMSSYO 0120- Contr |
| 30649 | 12068113  | NUMBER OF STAGES                               | 1  | Equipment 12068113 changed | - No batch input data for screen SAPMSSYO 0120- Contr |
| 30650 | 12068113  | NUMBER OF THROWS                               | 2  | Equipment 12068113 changed | - No batch input data for screen SAPMSSYO 0120- Contr |
| 30651 | 12068118  | NUMBER OF STAGES                               | 1  | Equipment 12068118 changed | - No batch input data for screen SAPMSSYO 0120- Contr |
| 30652 | 12068147  | NUMBER OF STAGES                               | 1  | Equipment 12068147 changed | - No batch input data for screen SAPMSSYO 0120- Contr |
| 30653 | 12068309  | Separator/Dehydrator Combo                     | NO                                       | Equipment 12068309 changed | - No batch input data for screen SAPMSSYO 0120- Contr |
| 30654 | 12068448  | Separator/Dehydrator Combo                     | NO                                       | Equipment 12068448 changed | - No batch input data for screen SAPMSSYO 0120- Contr |
| 30655 | 12068456  | Separator/Dehydrator Combo                     | NO                                       | Equipment 12068456 changed | - No batch input data for screen SAPMSSYO 0120- Contr |
| 30656 | 12068468  | Contents                                       | WATER                                    | Equipment 12068468 changed | - No batch input data for screen SAPMSSYO 0120- Contr |
| 30657 | 12068468  | ROOF TYPE                                      | FIXED                                    | Equipment 12068468 changed | - No batch input data for screen SAPMSSYO 0120- Contr |
| 30658 | 12068468  | TANK DIAMETER                                  | 1.3 FT                                   | Equipment 12068468 changed | - No batch input data for screen SAPMSSYO 0120- Contr |
| 30659 | 12068468  | TANK HEIGHT                                    | 4 FT                                     | Equipment 12068468 changed | - No batch input data for screen SAPMSSYO 0120- Contr |
| 30660 | 12068569  | Voltage  | 200000                                   | Equipment 12068569 changed | - No batch input data for screen SAPMSSYO 0120- Contr |
| 30661 | 12068570  | Voltage  | 480                                      | Equipment 12068570 changed | - No batch input data for screen SAPMSSYO 0120- Contr |
| 30662 | 12068571  | Voltage  | 480                                      | Equipment 12068571 changed | - No batch input data for screen SAPMSSYO 0120- Contr |
| 30663 | 12068572  | Voltage  | 480                                      | Equipment 12068572 changed | - No batch input data for screen SAPMSSYO 0120- Contr |
| 30664 | 12068384  | BTU RATING                                     | 0.13                                     | Equipment 12068384 changed | - Equipment 12068384 changed                          |
| 30665 | 12065484  | BTU RATING                                     | Y  | Value "Y" is not numeric   | - Value "Y" is not numeric                            |
| 30666 | 10456601  | TANK HEIGHT                                    | 15 FT                                    | Equipment 10456601 changed | - No batch input data for screen SAPMSSYO 0120- Contr |
| 30667 | 10456615  | TANK DIAMETER                                  | 15 FT                                    | Equipment 10456615 changed | - No batch input data for screen SAPMSSYO 0120- Contr |
| 30668 | 10454892  | TANK HEIGHT                                    | 12 FT                                    | Equipment 10454892 changed | - No batch input data for screen SAPMSSYO 0120- Contr |
| 30669 | 12067918  | Cold Set Pressure, psig                        | 125                                      | Equipment 12067918 changed | - Equipment 12067918 changed                          |
| 30670 | 12067918  | Design Temperature, F                          | 70                                       | Equipment 12067918 changed | - Equipment 12067918 changed                          |
| 30671 | 12067918  | Inlet Size, inches                             | 2  | Equipment 12067918 changed | - Equipment 12067918 changed                          |
| 30672 | 12067918  | Outlet Size, inches                            | 2  | Equipment 12067918 changed | - Equipment 12067918 changed                          |
| 30673 | 12067918  | Rain Cap Installed (yes / no)                  | YES                                      | Equipment 12067918 changed | - Equipment 12067918 changed                          |
| 30674 | 12067918  | Vent Elbow Drilled (yes / no)                  | YES                                      | Equipment 12067918 changed | - Equipment 12067918 changed                          |
| 30675 |   |  |  |                            |   |
| 30676 |   |  |  |                            |   |
| 30677 |   |  |  |                            |   |
| 30678 |   |  |  |                            |   |
| 30679 |   |  |  |                            |   |

# CENTRAL Best Practices

- Role of Workflow
- Lessons Learned
- Training
  - RUNNER
  - TRANSACTION

The screenshot displays the SAP Central Administration interface. On the left, a navigation menu includes sections for Documents, Lists, Discussions, Sites, People and Groups, and WINSHUTTLE CENTRAL Administration, with a Recycle Bin icon at the bottom. The main content area shows a repository for templates and training for runShuttle, with a sub-section for RUNNER Templates. This section contains a table listing various modules and their counts, followed by a list of specific templates with icons.

View All Site Content

**Documents**

- TRANSACTION Scripts
- Data Files
- RUNNER Templates
- Training Documents
- Secure Templates
- Material Data Team
- RUNNER Usage Logs
- Working Projects

**Lists**

- Gatekeepers
- Tasks
- SAP Global Support

**Discussions**

**Sites**

**People and Groups**

**WINSHUTTLE CENTRAL Administration**

Recycle Bin

Repository for templates and training for runShuttle. (ADM090 & ITD10)

**RUNNER Templates**

| Type | Name   |
|------|--|
|      | <b>Module : AM/IM - Asset Management/Investment Management (3)</b> |
|      | <b>Module : DMS - Document Management System (7)</b>               |
|      | <b>Module : FI/CO - Finance/Controlling (12)</b>                   |
|      | <b>Module : HR - Human Resources (6)</b>                           |
|      | <b>Module : JV - Joint Venture (14)</b>                            |
|      | <b>Module : MM - Material Masters (55)</b>                         |
|      | <b>Module : PM - Plant Maintenance (133)</b>                       |
|      | Master Data/Transactional Object : Bill of Material (11)           |
|      | Master Data/Transactional Object : Equipment (18)                  |
|      | IE01 - Create Equipment IT Servers                                 |
|      | IE01 - Create Equipment  |
|      | IE02 - Change Maintenance Plant                                    |
|      | IE02 - Change Vehicle Equipment                                    |
|      | IE02 - Add Class   |

# Exploring New Areas

- Projects
  - Security Cleanup
  - MM Tolerance Reset
  - SAP Repositioning
- Configuration
  - Company Code Setup
  - SD Table Maintenance



# Questions?

A dark grey silhouette of a city skyline, featuring various skyscrapers and buildings of different heights and shapes, spanning the bottom of the slide.

**WINSHUTTLE**  
USER  
GROUP